



Bharat Heavy Electricals Limited

## Monthly Monitoring Report - 15 (June, 2019)

### Environment Compliance Monitoring During Construction Period of 2x660 MW Maitree Super Thermal Power Project Rampal, Bagerhat



Submitted in July, 2019



Center for Environmental and Geographic Information Services

House 6, Road 23/C, Gulshan-1, Dhaka-1212, Bangladesh. Tel: 88 02 58817649-52; 9842581, 9842551 Fax: 88 02 9843128, <http://www.cegisbd.com>



**Monthly Monitoring Report – 15**  
**(June 2019)**  
**Environmental Compliance Monitoring**  
**During Construction Period**  
**of 2x660 MW Maitree Super Thermal Power Project**  
**Rampal, Bagerhat**



## Acknowledgements

The Center for Environmental and Geographic Information Services (CEGIS), a Public Trust under the Ministry of Water Resources, is grateful to Bharat Heavy Electricals Limited (BHEL) for awarding the contract of consultancy for “Monthly Environment Compliance Monitoring during the Construction Period for 2x660 MW Maitree Super Thermal Power Project at Rampal in Bagerhat District, Khulna Division” for a period of twenty-nine months.

CEGIS greatly acknowledges the extensive support of Mr. Surojit Mandal, General and Construction Manager, BHEL (Power Sector – Eastern Region: Maitree 2x660 MW STPP) extended to CEGIS as an independent agency during June 2019 for 15<sup>th</sup> monthly environmental compliance monitoring activities. CEGIS is thankful to Mr. Sartaj Husain, Dy. Engineer, BHEL (BIFPCL 2x660 MW MSTPP) for his cooperative insistence for accelerating this Monthly Environment Compliance Monitoring Project. Additionally, CEGIS is also grateful to Mr. Ratnadeep Kumar, Asst. Engineer (Safety), BHEL (BIFPCL 2x660 MW MSTPP) for mobilizing the activities at the field level.



# Table of Contents

<b>Acknowledgements .....</b>	<b>i</b>
<b>List of Tables .....</b>	<b>iv</b>
<b>List of Figures .....</b>	<b>iv</b>
<b>Abbreviations and Acronyms .....</b>	<b>v</b>
<b>Glossary .....</b>	<b>vii</b>
<b>Unit Conversion .....</b>	<b>ix</b>
<b>1. Introduction .....</b>	<b>1</b>
1.1 Background .....	1
1.2 Brief of the Project .....	1
1.3 Selection of Sample Collection Site .....	2
1.4 Location of the Project .....	2
1.5 Study Objectives .....	5
1.6 Scope of the Services .....	5
1.7 Purpose of the Study .....	6
1.8 Team Mobilization .....	6
<b>2. Approach and Methodology .....</b>	<b>7</b>
2.1 Overall Approach .....	7
2.2 Methodology of Environmental Compliance Monitoring .....	7
2.2.1 Ambient Air Quality .....	8
2.2.2 Water Quality .....	9
2.2.3 Ambient Noise Level .....	11
<b>3. Results and Discussion .....</b>	<b>17</b>
3.1 Ambient Air Quality .....	17
3.2 Water Quality .....	20
3.3 Ambient Noise Level .....	26
<b>4. Follow-up Action .....</b>	<b>33</b>
<b>Appendix I: Compliance Monitoring Form for 2x660 MW MSTPP, Rampal, Bagerhat, BIFPCL .....</b>	<b>35</b>

## **List of Tables**

Table 1.1: Environmental Parameters Measurement during Monthly Monitoring Visit.....	5
Table 1.2: Composition of Environmental Compliance Monitoring Team.....	6
Table 2.1: Methods Followed in Analyzing Water Samples .....	11
Table 3.1: Ambient Air Quality Monitoring Results .....	18
Table 3.2: RO Discharge Water Quality Monitoring Result.....	21
Table 3.3: Storm Water Discharge Quality Monitoring Result .....	23
Table 3.4: Drinking Water Quality Monitoring Result (Near Jetty Area) .....	25
Table 3.5: Ambient Noise Level from In and Around the Project Site.....	27

## **List of Figures**

Figure 1.1: Location of 2x660 MW Maitree Super Thermal Power Plant.....	3
Figure 1.2: Location of Maitree Super Thermal Power Plant in Google Map.....	4
Figure 2.1: Monitoring Framework.....	7
Figure 2.2: Ambient Air Quality Monitoring during Day time.....	8
Figure 2.3: Ambient Air Quality Monitoring during Night time.....	8
Figure 2.4: In-situ parameters Testing.....	9
Figure 2.5: RO Discharge outlet and Discharge Water Sample Collection .....	10
Figure 2.6: RO Drinking Water Sample Collection .....	10
Figure 2.7: Storm Discharge Water sample Collection and Discharge outlet .....	10
Figure 2.8: Ambient Noise Level Monitoring during Day Time.....	12
Figure 2.9: Ambient Noise Level Monitoring during Night time .....	13
Figure 2.10: Sampling Locations Map.....	14
Figure 2.11: Sampling Locations shown in Google Map .....	15



## Abbreviations and Acronyms

BHEL	Bharat Heavy Electricals Limited
BIFPCL	Bangladesh-India Friendship Power Company Limited
BOD	Biochemical Oxygen Demand
BPDB	Bangladesh Power Development Board
CEGIS	Center for Environmental and Geographic Information Services
CO	Carbon Monoxide
CO <sub>2</sub>	Carbon Dioxide
COD	Chemical Oxygen Demand
DO	Dissolved Oxygen
DoE	Department of Environment
EC	Electric Conductivity
EHS	Environmental Health Safety
EIA	Environmental Impact Assessment
EMP	Environmental Management Plan
EPC	Engineering, Procurement and Construction
EPP	Environmental Protection Plan
HSE	Health Safety and Environment
MW	Mega Watt
NO <sub>x</sub>	Oxides of Nitrogen
NTPC	National Thermal Power Corporation
PM	Particulate Matter
PP	Power Plant
PPE	Personal Protective Equipment
SO <sub>2</sub>	Sulfur Dioxide
SPM	Suspended Particulate Matter
TDS	Total Dissolved Solid
ToR	Terms of Reference
USEPA	United States Environmental Protection Agency



## Glossary

Term	Definition
Compliance	When construction activities are being conducted in accordance with the Environmental Requirements (standards) of the Project.
Environmental Requirements	Environmental Specifications set out in the Environmental Management Plan (EMP) and relevant Environmental Protection Plan (EPP). Conditions included in the Environmental Assessment Approval for the Project.
Non-conformance	A construction activity conducted in a manner that deviates from a best management practice, compliance with which is required in the EPP for that construction activity.
Non-compliance	A construction activity conducted in a manner that deviates from a legal condition under a permit, an enactment, or a regulation, compliance with which is required in the EPP for that construction activity.
Reportable Environmental Incident	An incident of non-conformance or non-compliance which has caused or has the potential for causing an impact on the quality of air, land or water, human life, wildlife, aquatic species, species at risk or heritage resources, and is reportable under a permit, an enactment, or a regulation.



# Unit Conversion

## General Units

1 meter = 3.28 ft

1 kilometer = 0.621371192 mile

1 nautical mile = 1.852 kilometer

1 kilogram = 2.20 pound

1 metric ton = 1000 kg

1 barrel = 42 U.S. gallons = 159.0 liters

1 liter = 0.264172052 gallon (US)

1 square mile = 640 acres = 2.590 km<sup>2</sup>

1 hectare = 10<sup>-2</sup> km<sup>2</sup> = 2.471 acres

1 Pascal = 1 N/m<sup>2</sup> = 0.01 millibar

1 liter = 0.001 cubic meter

1°C = 274.15K = 33.8°F

1 mg/m<sup>3</sup> = 1 µg /L

1 mg/L ≈ 1 g/m<sup>3</sup> ≈ 1 ppm (w/w)

1 ≈ g/L ≈ 1 mg/ m<sup>3</sup> ≈ 1 ppb (w/w)

1 knot = 0.514444 m/s

1µg/m<sup>3</sup> = 1 ppb\*(12.187)\*(M) / (273.15 + °C)

## Energy Units

1 Cal = 4.19 J

1 Btu = 1055.87J

1 Btu = 251.9958 cal

1 joule = 0.239 cal

1 kWh = 3412 Btu.

1MW=1000KW=10<sup>6</sup> W

1 kWh = 3.6 x 10<sup>6</sup> J

1 kWh = 859.85 kcal

1 horsepower = 746 W

1 GWyr = 8.76 x 10<sup>9</sup> kWh



# 1. Introduction

## 1.1 Background

The Maitree Super Thermal Power Plant is a joint venture Project of Bangladesh Power Development Board (BPDB), and National Thermal Power Corporation (NTPC) Ltd., India and is run by Bangladesh-India Friendship Power Company Pvt. Ltd. (BIFPCL). Bharat Heavy Electricals Limited (BHEL) has been awarded with the contract of all Engineering, Procurement and Construction works of the Power Plant to be completed within the specified time schedule. BHEL has already initiated the construction works. In order to fulfil the environmental consequences, BHEL has decided to engage a third party for monthly monitoring of the environmental compliance within the Project area as per the requirement of Department of Environment (DoE), Bangladesh EIA approval condition no.-44 which is: “Environmental Monitoring Reports according to specific format specified in the EIA Report shall be made available simultaneously to DoE Bagerhat District Office, Khulna Divisional Office and Headquarters on a monthly basis during the construction period of the Project.”. In this regard, monitoring of environmental parameters as well as the status of Environmental Health and Safety (EHS) should be conducted in accordance with the EMP as stated in EIA Study Report.

Accordingly, CEGIS has been appointed by BHEL for conducting the monthly monitoring of the environmental compliance of Maitree Super Thermal Power Plant of BIFPCL for a period of one year starting from April 2018. According to the contract, CEGIS has already conducted environmental compliance monitoring from April 2018 till March, 2019 and submitted all the monthly reports to BHEL. As the monitoring activities need to be continued for the entire construction period and the reports need to be submitted to DoE on monthly basis, another contract has been signed between BHEL and CEGIS for conducting the monthly monitoring of the environmental compliance of Maitree Super Thermal Power Plant of BIFPCL for a period of twenty-nine months starting from April 2018. Accordingly, CEGIS conducted the fourteenth monthly monitoring activities during May, 2019 under the new contract and submitted the Report to BHEL. As a continuous process, CEGIS conducted the fifteenth monthly monitoring activities during June 2019 and accordingly this 15<sup>th</sup> monthly monitoring Report has been prepared for submission to BHEL for their consideration. The aforementioned format of the Report specified in the EIA study along with the monitoring results has been appended in the **Annex-I**.

## 1.2 Brief of the Project

The construction works of BIFPCL 2x660 MW Maitree STPP has been progressing well and the Project is now in the infrastructure development stage. The Project area includes 366.40 hectares (905 acres) of land (Block-A) which is just beside the BPDB Project area (Block-B). The MSTPP Project area is connected with a 6 km long two-lane access road from the Khulna-Mongla Highway to the MSTPP area. Expansion works are going on to convert this access road into a six-lane access road. A number of construction companies are now working at the BIFPCL Project site to complete the civil works within the stipulated time schedule. The Project activities conducted at various stages include:

- Extension work for increasing the width of the access road within the Project area;
- Passage of road for traffic movement for construction purposes;

- Construction works of some roads and permanent drainage network in the Project area;
- Construction materials are aggregated for major mechanical construction works;
- Pile driving, soil compaction, base and sub-base construction activities;
- Construction works in the Jetty area;
- Labor shed construction and also construction of new labor sheds;
- Service works;
- Power supply from the national grid and also from generator at Project site;
- Concrete Batching Plant and concrete pouring operations; and
- Development of various infrastructure works like store, material shed, labor shed, office complex, residential complex etc.

### 1.3 Selection of Sample Collection Site

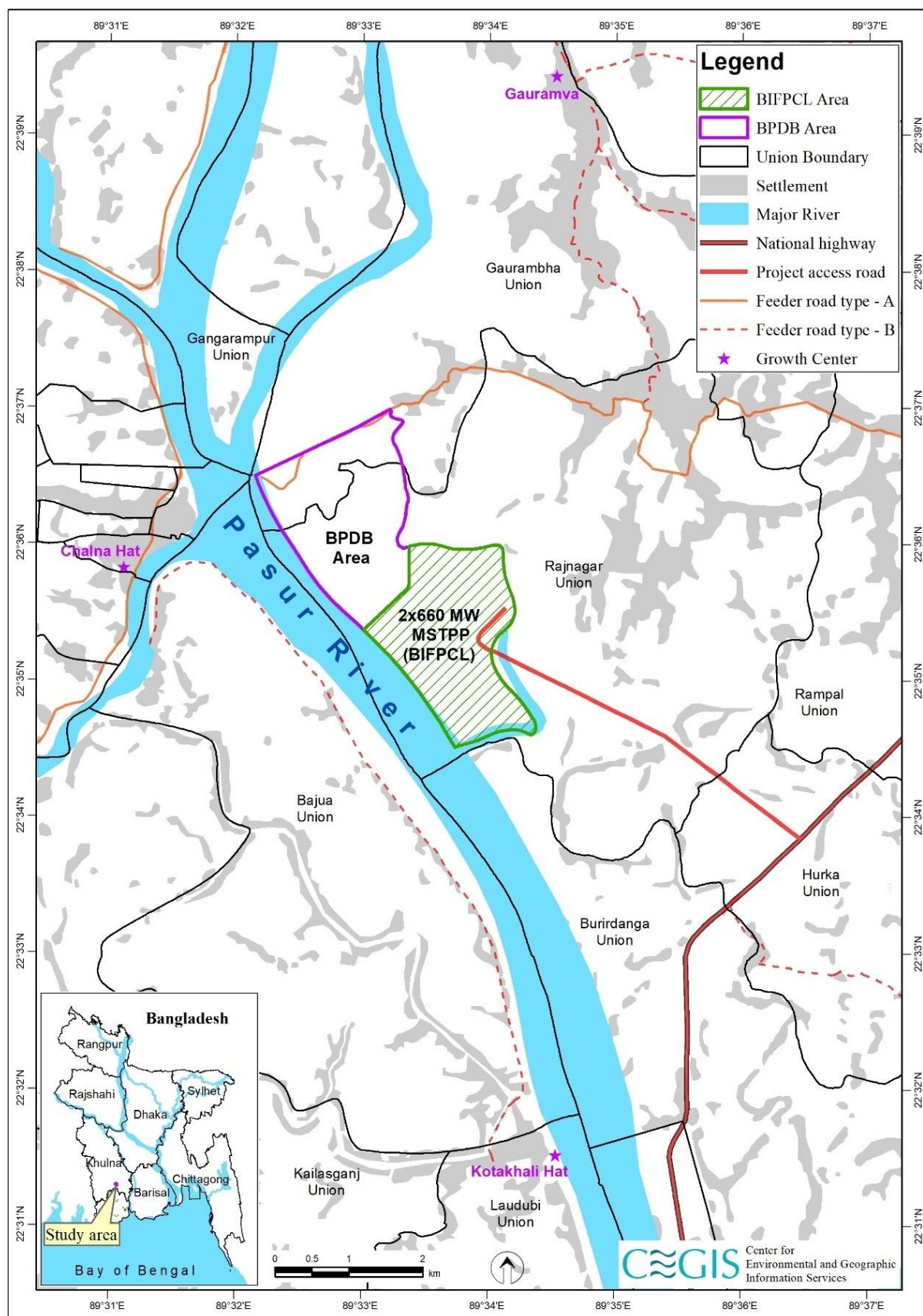
This fifteenth Monthly environmental compliance monitoring has been conducted from 17<sup>th</sup> June 2019 to 20<sup>th</sup> June 2019. One Environmental Expert and one Engineer along with two Technicians of CEGIS visited the Project area and conducted the field investigation. They collected samples from the pre-selected site and monitored the sampling equipment continuously.

The Team maintained communication with Mr. Sartaj Husain, Dy. Engineer, BHEL for informing him about the routine monitoring activities. A discussion meeting was held on 19 June 2019 with the proponent regarding the Safety Park and Training Centre air quality sampling location, monitoring schedule and significant issues of ambient air quality and noise level. During this field visit of CEGIS monitoring team from 17-20<sup>th</sup> June 2019, Mr. Sartaj Husain, Dy. Engineer, BHEL assisted the monitoring team in collecting data and information and facilitated the field monitoring activities. During this field trip, the monitoring team has successfully conducted the field activities and eventually, generated the monitoring results after laboratory analysis that has been presented in this fifteenth monthly monitoring Report.

### 1.4 Location of the Project

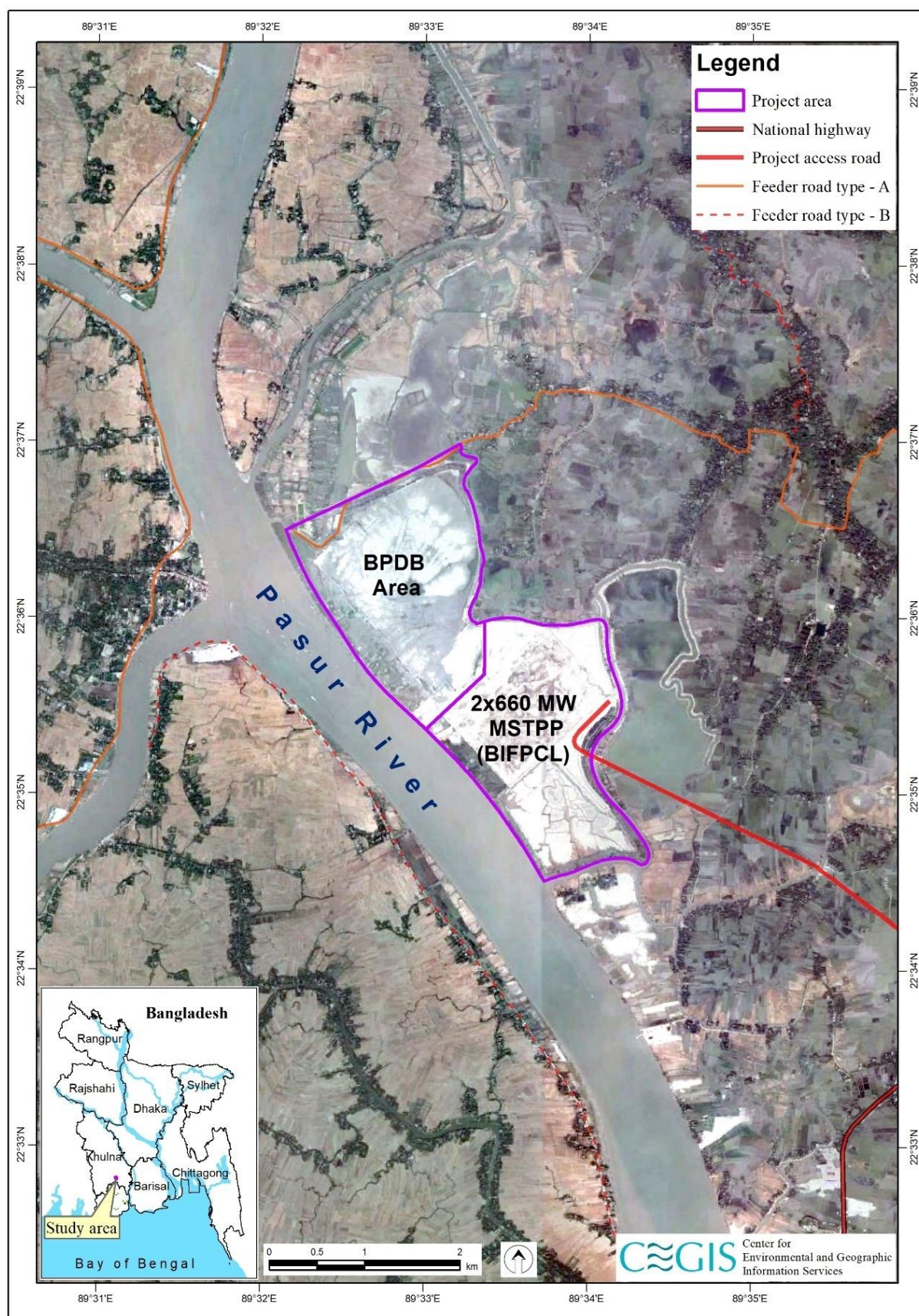
The MSTPP is located in between latitude 22° 37' 0"N to 22°34'30"N and longitude 89°32'0"E to 89°34'5"E and at about 23 km south of the Khulna City and 14 km north-eastward from the Sundarbans. The location of the MSTP Project area is presented in **Figure 1.1** and **Figure 1.2** respectively.





**Figure 1.1: Location of 2x660 MW Maitree Super Thermal Power Plant**





**Figure 1.2: Location of Maitree Super Thermal Power Plant in Google Map**

## 1.5 Study Objectives

The overall objective of this study is to monitor the environmental compliance of certain parameters during the construction phase of this Power Plant Project.

- Monitoring of the certain environmental parameters of air quality, water quality and noise level at the sensitive receptor (point) in and around the Project site;
- Comparing the monitoring results with national (ECR, 1997) and international standard (IFC, 2007); and
- Identifying the causes behind non-compliance and suggesting mitigation measures accordingly.

## 1.6 Scope of the Services

The scope of the study are as follows which are specified in **Table 1.1**

- Conducting monthly air quality monitoring continuously (24 hrs.) at the sensitive receptors within the project boundary. Air quality monitoring stations are to be set at least one in every location near the labour shed, one in safety park and training centre area, and one at the Jetty area. Air quality monitoring parameters to be monitored include PM<sub>10</sub>, PM<sub>2.5</sub>, SPM, SO<sub>2</sub>, NO<sub>x</sub>, CO and O<sub>3</sub>.
- Conducting monthly water quality monitoring in the project area, especially at the discharge points. At least three samples are to be collected from the project area, which include discharge outlet point and drinking water, etc. The monitoring parameters are pH, DO, Salinity, Temperature, BOD<sub>5</sub>, COD, Hardness, Electric Conductivity (EC), TDS, NO<sub>3</sub>, PO<sub>4</sub>, SO<sub>4</sub>, and CL<sup>-</sup> after grab sampling.
- Conducting monthly monitoring of noise level as Leq, (dBA) values both for day and night time. Noise level will be monitored at ten locations through USEPA approved standard procedure. Monitoring locations will be determined because of site-specific work and location sensitivity.

**Table 1.1: Environmental Parameters Measurement during Monthly Monitoring Visit**

Parameters		Number of Location	Frequency of Sampling	Quantity of Samples	Guidance and Acceptance of the tests
Air Quality	PM <sub>10</sub> , PM <sub>2.5</sub> , SPM, SO <sub>2</sub> , NO <sub>x</sub> , CO and O <sub>3</sub>	<ul style="list-style-type: none"> <li>• North west corner of the Power Plant/Jetty Location</li> <li>• Shed area.</li> <li>• Major Construction area</li> </ul>	1	3	As per the guidelines provided in approved EIA reports for 2x660 MW, Coal based Thermal Power Construction Project at Rampal Upazila, under Bagerhat District of Bangladesh and in line with the relevant Environmental Acts and Rules
	BOD <sub>5</sub>	<ul style="list-style-type: none"> <li>• Outlet point-1</li> <li>• Outlet point-2</li> <li>• Outlet point-3</li> </ul>	1	3	
Water Quality	COD		1	3	
	Total Hardness		1	3	
	Chlorine		1	3	
	pH		1	3	
	DO		1	3	
	Salinity		1	3	
	Temperature		1	3	
	EC		1	3	
	Nitrate		1	3	

Parameters		Number of Location	Frequency of Sampling	Quantity of Samples	Guidance and Acceptance of the tests
	Sulphate		1	3	of Govt. of Bangladesh.
	Phosphate		1	3	
	TDS		1	3	
Noise Level	Noise level	10 sites (considering the major sensitive area/ construction activities)	1	10	

### 1.7 Purpose of the Study

Environmental Compliance Monitoring is immensely necessary for a project to assess the environmental status, non-compliance and non-conformance issues as per national environmental standards and good international practices. Additionally, with the aim of complying the EIA approval condition (Condition no.: 44) of Department of Environment, Bharat Heavy Electricals Limited (BHEL) has engaged Center for Environmental and Geographic Information Services (CEGIS) for carrying out the Monthly Environmental Compliance Monitoring study of the Maitree Super Thermal Power Plant. The Environmental Monitoring report presents the results of physical environment, particularly ambient air quality, ambient noise level and water quality, during the construction phase of the proposed Power Project. These monitoring activities has already started from the month of April 2018 and has been continued for one year. Then under a separate contract signed between BHEL and CEGIS monthly monitoring has been conducted since April 2019. Moreover, quarterly monitoring of environmental parameters is already being conducted by BIFPCL since February 2014. The results of the monitoring are being presented on a monthly basis to BHEL reflecting the compliance status of the environmental parameters along with the follow-up actions.

### 1.8 Team Mobilization

An Environmental Compliance Monitoring Team consisting of one Environmental Expert, one Junior Environmental Engineer and two technicians conducted the monitoring study in the field (**Table 1.2**). The monitoring Team worked at the BIFPCL 2x660 MW MSTPP site for 4 days i.e., from 17<sup>th</sup> to 20<sup>th</sup> June 2019. The monitoring activities have been performed independently as per standard practices.

**Table 1.2: Composition of Environmental Compliance Monitoring Team**

Position Assigned	Number	Responsibilities
Environmental Expert	1	Preparation of the Monitoring Plan, maintaining effective communication with BHEL and preparation of the Report.
Junior Environmental Engineer	1	Implementation of the compliance monitoring and preparation of the Report
Technician	2	Operation of the machineries and equipment, sampling etc.,

Samples collected from the field have been submitted to laboratory for analysis and testing. The results were checked meticulously. The root cause of changing environmental parameters over period has been assessed after analysis of the results and field observation. Additionally, a compliance monitoring Report for the month of June 2019 has been prepared, which is reviewed by the internal and external experts. A number of internal professional man power inputs have been used within the Consultant's Team for the efficient functioning and completion of the services.

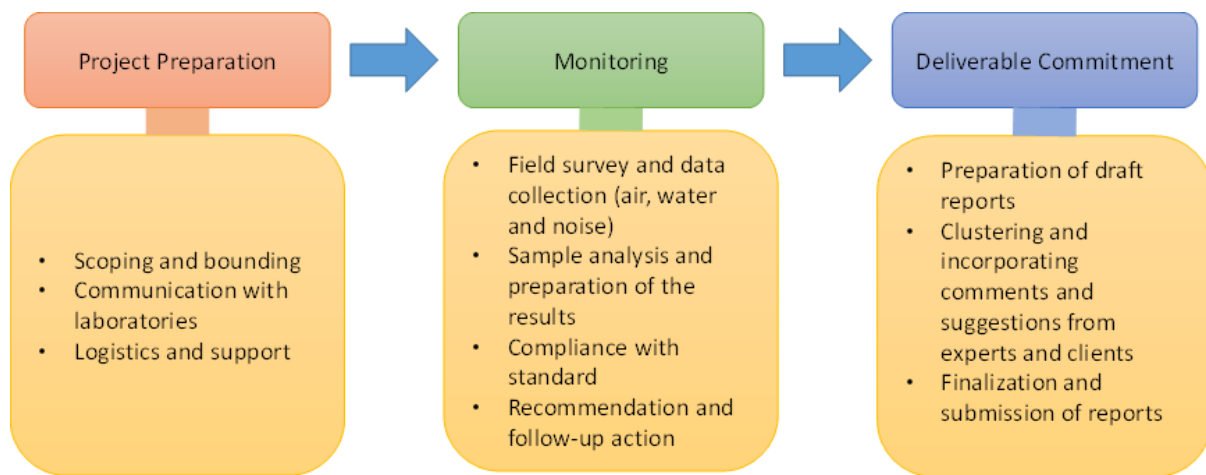


## 2. Approach and Methodology

### 2.1 Overall Approach

The Study approach is prepared based on the scope of services. According to the ToR, this monitoring report has been prepared for the month of June 2019. The environmental parameters for air quality, water quality and noise level have been selected based on the monitoring framework of the EIA study of 2x660 MW Coal based Thermal Power Plant Project at Rampal, Bagerhat which is also recommended in the scope of the services.

The location of air, water and noise monitoring sites (stations) were selected depending on the recommendation of the EIA study, location sensitivity and impact potentiality of that particular area in a specific time period. The **Figure 2.1** below provides an understanding of the different activities, which were carried out during the monthly monitoring of Environmental Compliance of Maitree Super Thermal Power Plant.



**Figure 2.1: Monitoring Framework**

Monitoring of environmental parameters like air quality, water quality and noise level have been investigated through different monitoring equipment and tools. For air quality monitoring volumetric sampler has been used, water quality parameters have been tested in-situ in the field and grab sample has been collected for laboratory analysis and finally the sound pressure level meter has been used to estimate the present noise level equivalent in the surrounding areas. The monitoring activities have been conducted continuously at specified locations by skilled technicians and professionals.

### 2.2 Methodology of Environmental Compliance Monitoring

The monitoring activities have been performed through a methodological framework. QA/QC procedure have been maintained during the field investigation and sampling of all the environmental parameters. The locations of air quality, water quality and noise level monitoring are shown in **Figure 2.9** and **Figure 2.10**. The locations are subjected to change in future depending on the potentiality of the impacts and its magnitude, sensitivity of the receptors and capturing the worst-case scenarios. The procedures associated with the monitoring of each of the environmental parameters are described in the following sub-articles.

### 2.2.1 Ambient Air Quality

The ambient air quality has been monitored in three locations as specified in Figure 2.9. Air quality monitoring has been performed at locations adjacent to the labor shed, jetty areas and construction site where construction and installation works as well as transportation of materials for working might affect the ambient air quality. The air samples have been collected at the construction areas to test the environmental parameters to ensure that the EPC contractor BHEL complies with the terms and conditions of environmental protection.

Emission of particulate matters and gaseous pollutants from the construction site have been monitored for 24 hours continuously. All of the criteria pollutants ( $PM_{10}$ ,  $PM_{2.5}$ , SPM,  $SO_2$ ,  $NO_x$ , CO and  $O_3$ ) have been monitored at specified places. Respirable Dust Sampler (Model-Envirotech India APM-460BL) and Fine Particulate Sampler (Model-Envirotech India APM-550) have been used to collect the air samples. The  $PM_{2.5}$ ,  $PM_{10}$ , and SPM have been tested by gravimetric method. The  $SO_2$  has been absorbed in a specified chemical and tested by West-Gaeke method. The  $NO_2$  has also been absorbed in specified chemicals and tested by Jacob and Hochheiser method. Finally, CO and  $O_3$  have been measured using a Metravi CO-10 meter and Tongdy  $O_3$  monitor, respectively.



Figure 2.2: Ambient Air Quality Monitoring during Day time



Figure 2.3: Ambient Air Quality Monitoring during Night time

### 2.2.2 Water Quality

Reverse osmosis technology is being used for producing fresh water by treatment of saline water of the Passur River as per suggestion of the EMP of EIA study. In this process, high concentrated saline water called brine is produced which is ultimately discharged to the Passur River. At present there are two RO based Water Treatment Plants supplying water to the officials of BIFPCL, BHEL and the workers. The workers usually collect their drinking water from Jetty Side RO drinking water point during two times in a day. Large quantity of water barrel, jars are used to reserve water at the worksite after filling them from the RO drinking water supply point. At the time of field investigation, the RO based Water Treatment Plant near the Jetty area was in operation.

During this 15<sup>th</sup> monthly compliance monitoring program three water samples were collected, one from RO technology (near jetty area) based Water Treatment Plant discharge outlet, one from storm water discharge outlet near the North-East corner of the Project Boundary which is located in latitude 22° 35' 59.5"N and longitude 89°33' 42.2"E and one from drinking water outlets from RO Plant near the Plant jetty site for analysis. The locations of samples collected for water quality monitoring are shown in **Figure 2.4, Figure 2.5 RO Drinking Water Sample Collection, Figure 2.6, and Figure 2.7**. A sample of water discharged from the Project site to Passur River was collected to determine the status of discharge water quality.

Water quality field investigation was conducted in June 2019. Storm water discharge outlet has been observed at different places around the project site. Therefore, one sample from storm water discharge outlet, one from RO discharge water outlet and one from RO Drinking water outlet has also been collected.



**Figure 2.4: In-situ parameters Testing**





**Figure 2.5: RO Discharge outlet and Discharge Water Sample Collection**



**Figure 2.6: RO Drinking Water Sample Collection**



**Figure 2.7: Storm Discharge Water sample Collection and Discharge outlet**



Standard practices have been followed for monitoring the water quality. In-situ testing was done at field and collected samples were brought and submitted to the laboratory for various analysis. The parameters that were analysed include pH, DO, Salinity, Temperature, BOD<sub>5</sub>, COD, EC, TDS, NO<sub>3</sub>, PO<sub>4</sub>, SO<sub>4</sub>, and Chloride as recommended in the EIA study done for the BIFPCL Project. Detail methodology for testing the water quality parameters are shown in **Table 2.1**.

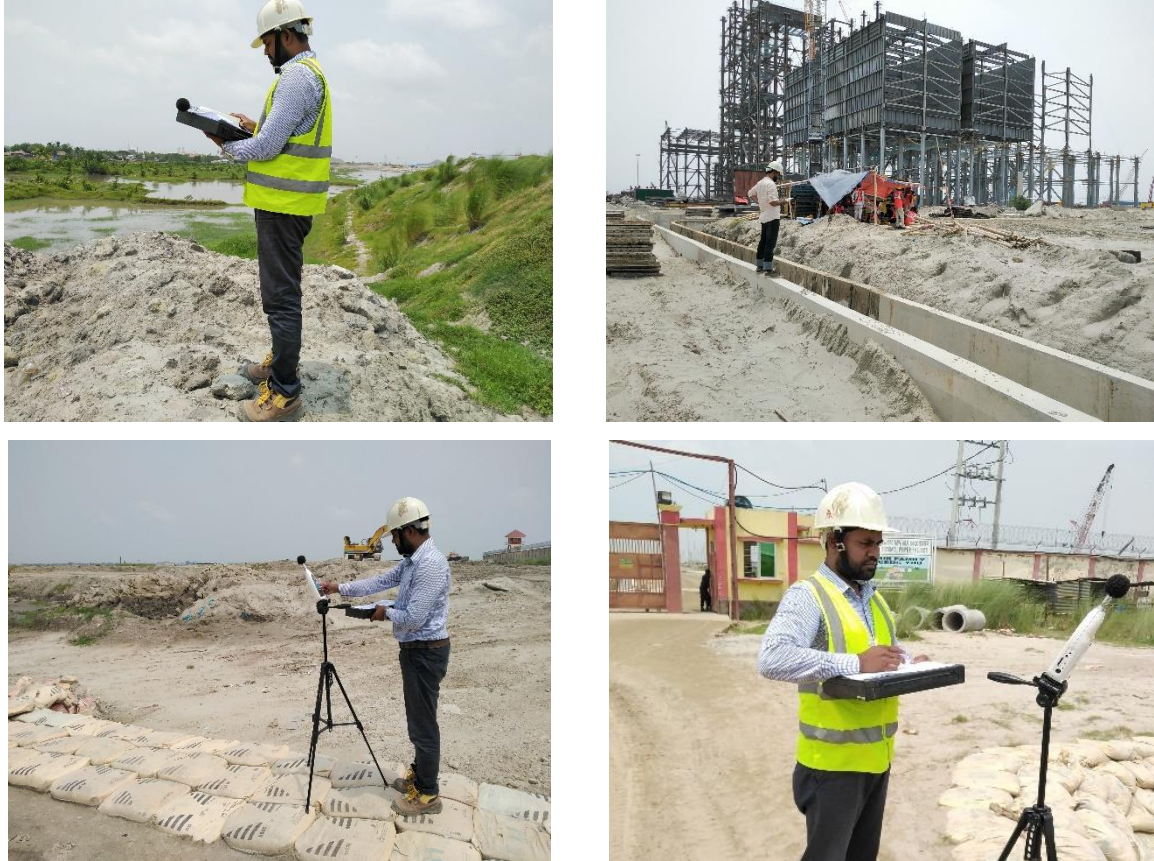
**Table 2.1: Methods Followed in Analyzing Water Samples**

Sl. No	Parameters	Unit	Methods	Reference
01	Temp	°C	Electrode	HORIBA, U-50 Multi-parameter Water Quality Meter
02	pH	pH	Electrode	HORIBA, U-50 Multi-parameter Water Quality Meter
03	EC	µS/cm	Electrode	Multi-parameter meter (Instrument Catalog)
04	TDS	mg/L	Electrode	Multi-parameter meter (Instrument Catalog)
05	Dissolved Oxygen (DO)	mg/L	DO Meter	Lutron DO 5519 (Instrument Catalog)
06	Biological Oxygen Demand (BOD <sub>5</sub> )	mg/L	DO Meter	Lutron DO 5519 (Instrument Catalog)
07	Chemical Oxygen Demand (COD)	mg/L	Colorimetric Method (COD Reactor: Et 125 SC and Spectrophotometer: UNICO 4802)	APHA, (1992)
08	Total Hardness (TH)	mg/L	Titrimetric Method	APHA, (1992)
09	Chloride (Cl <sup>-</sup> )	mg/L	Moh's Titration	APHA, (1992)
10	Sulfate (SO <sub>4</sub> <sup>2-</sup> )	mg/L	Turbidity metric Method	APHA, (1992)
11	Phosphate (PO <sub>4</sub> <sup>3-</sup> )	mg/L	Ascorbic Acid Method	APHA, (1992)
12	Nitrate (NO <sub>3</sub> <sup>-</sup> )	mg/L	Ultraviolet Spectrophotometric Screening Method	APHA, (1992)
13	Salinity	ppt.	Electrode	HORIBA, U-50 Multi-parameter Water Quality Meter
14	Turbidity	NTU	Electrode	HORIBA, U-50 Multi-parameter Water Quality Meter

### 2.2.3 Ambient Noise Level

During the construction stage, the major source of noise is expected to stem from the construction site, movement of vehicles, electricity producing, generator etc. For the sake of this study, ambient noise levels have been monitored at 10 locations. Noise levels have been measured during day and night time at each of the 10 locations based on the location sensitivity, importance and impact potentiality. Each time the noise level was recorded for fifteen minutes continually by using portable noise level meter. The sites are subject to change in future monitoring schedule based on the changing of working areas, types of work and importance of the location.

Noise is described by a weighted sound intensity (or level) and is measured in units called decibels (dBA). However, in this circumstance the noise level has been measured in terms of A- weighted equivalent continuous sound pressure level ( $L_{eq}$ ) and recorded by Sound Level Meter (kanomax-4431). Depending on the site condition and acoustic environment, the noise meter was set up and calibrated each time following the manufacturer's instruction manual.



**Figure 2.8: Ambient Noise Level Monitoring during Day Time**



**Figure 2.9: Ambient Noise Level Monitoring during Night time**



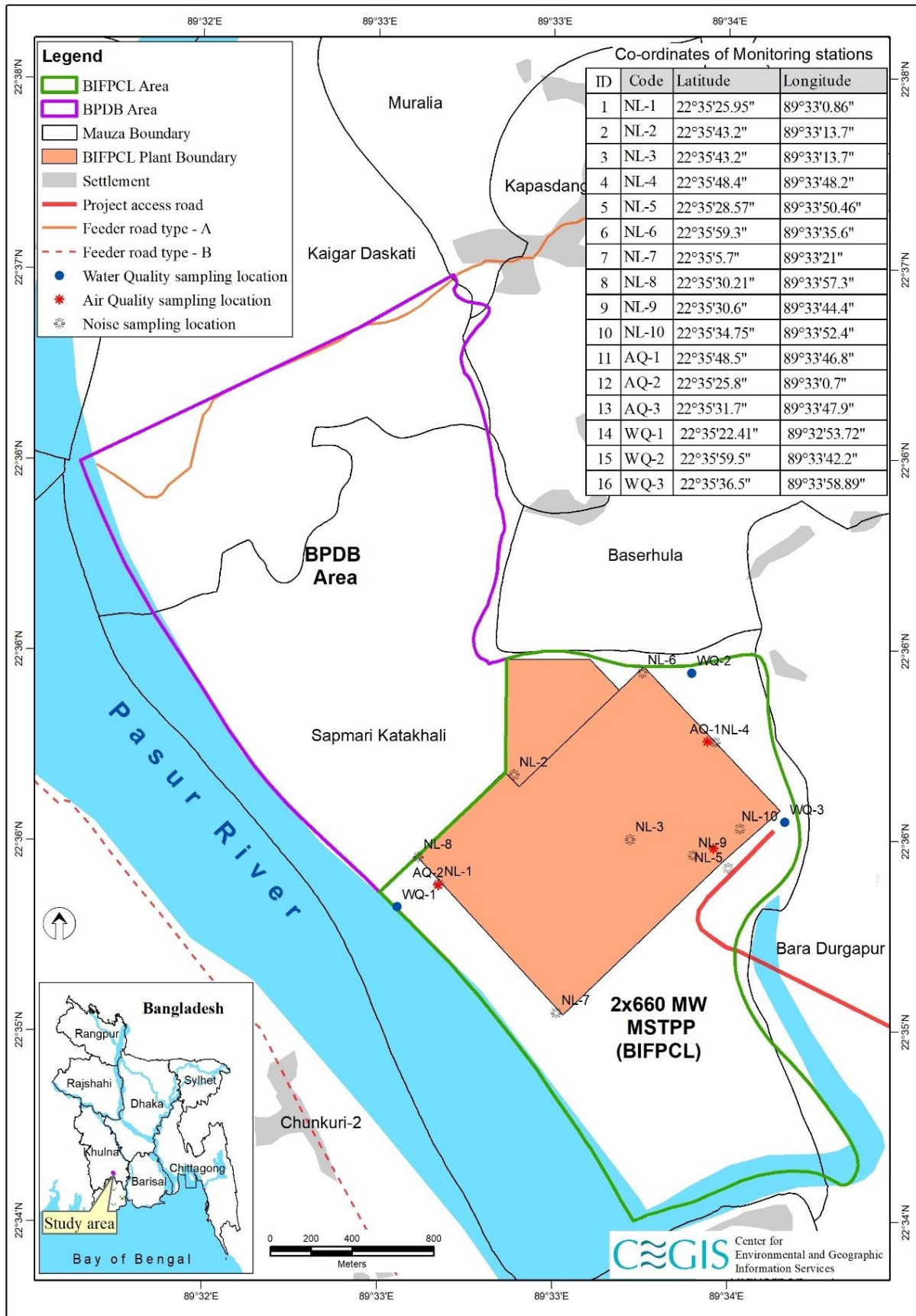


Figure 2.10: Sampling Locations Map

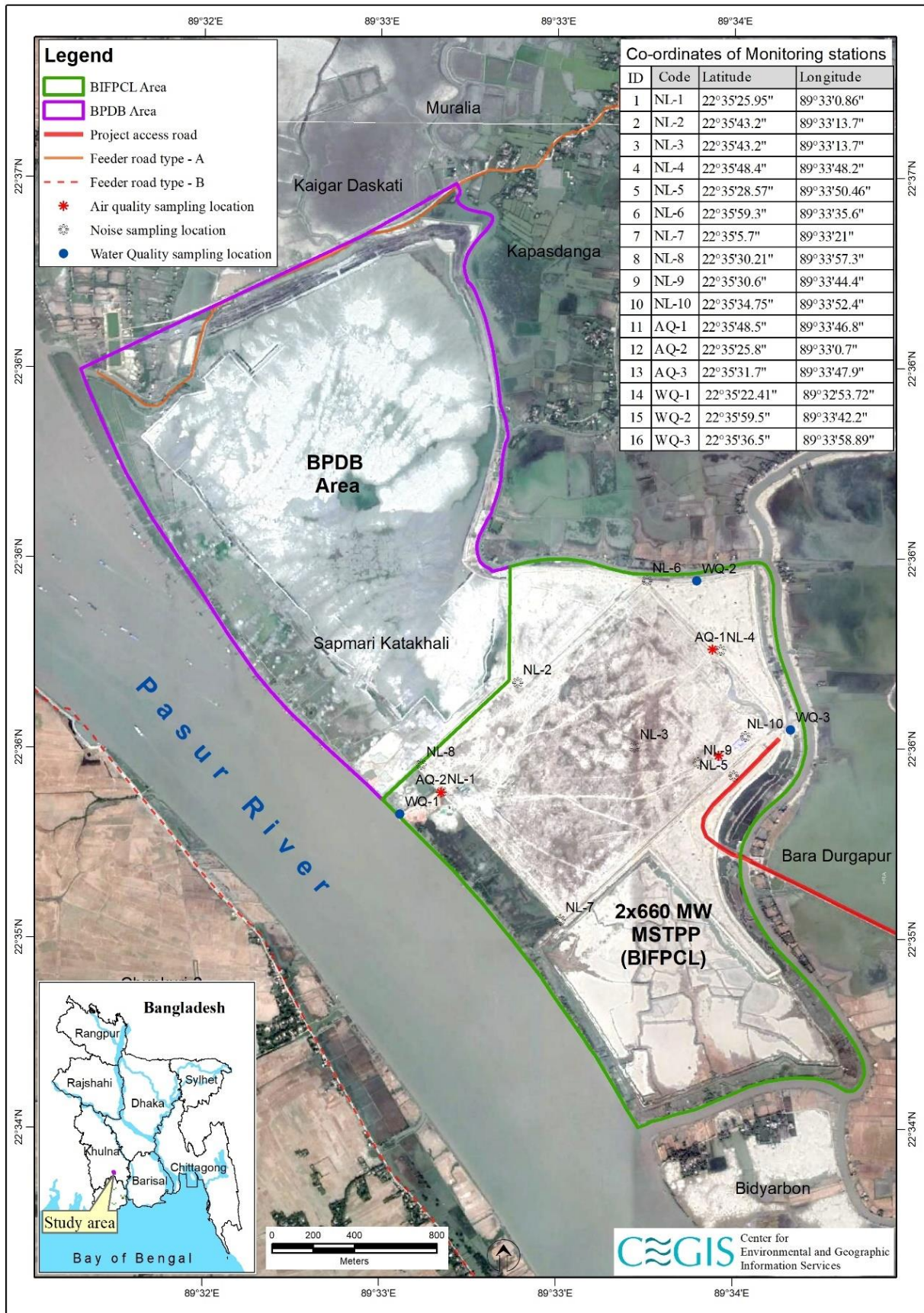


Figure 2.11: Sampling Locations shown in Google Map



### **3. Results and Discussion**

Environmental compliance monitoring has been implemented by an independent organization, CEGIS under a contract signed between BHEL and CEGIS. In line with the directives of the ToR of the contract, the environmental compliance monitoring has been performed. The monthly environmental monitoring results have been generated through in-situ testing and analysis of samples at the laboratory. This report also compares the sample results with the standard limits and provides commentary on environmental issues during the month of June 2019. Results of the previous investigations (1<sup>st</sup> to 14<sup>th</sup> month) have also been incorporated in this Report so as to compare the overall trend of the concerned environmental compliances.

#### **3.1 Ambient Air Quality**

Air quality has been sampled through volumetric sampling procedure. Samples have been collected for 24 Hours continually at three places namely labour shed, Jetty area and Safety Park & Training Centre areas inside the project site. All of the criteria pollutants have been checked in the Project site in order to assess the baseline situation as well as for the compliance standard. Table 3.1 shows the monitoring results of the criteria pollutants.



Table 3.1: Ambient Air Quality Monitoring Results

PM <sub>10</sub>	SPM	NO <sub>x</sub>	SO <sub>2</sub>	Criteria Pollutant (µg/m <sup>3</sup> )	Monitoring Locations															Standard Limit	
					Labor Shed AQ-1 (24hr)					Jetty Location AQ-2 (24hr)					Major Construction Area AQ-3 (24hr)					ECR, 1997 and subsequent amendment	IFC, 2007
					1 <sup>st</sup> MM (Apr. 2018)	2 <sup>nd</sup> MM (May, 2018)	3 <sup>rd</sup> MM (Jun. 2018)	4 <sup>th</sup> MM (Jul. 2018)	5 <sup>th</sup> MM (Aug. 2018)	6 <sup>th</sup> MM (Sept.2018)	7 <sup>th</sup> MM (Oct.2018)	8 <sup>th</sup> MM (Nov.2018)	9 <sup>th</sup> MM (Dec.2018)	10 <sup>th</sup> MM (Jan.2019)	11 <sup>th</sup> MM (Feb.2019)	12 <sup>th</sup> MM (Mar.2019)	13 <sup>th</sup> MM (Apr.2019)	14 <sup>th</sup> MM (May.2019)	15 <sup>th</sup> MM (June,2019)		
149.1	174.1	15.4	13.3																		
115.1	148.9	15.1	11.5																		
140.2	160.1	16.5	14.2																		
109.3	134.1	13.9	11.9																		
89.9	102.1	12.9	10.9																		
85.6	94.7	7.6	6.6																		
95.2	109.1	8.9	7.4																		
114.9	153.7	14.2	12.5																		
119.9	166.0	13.6	12.0																		
134.7	168.9	14.0	13.8																		
145	192.1	14.2	13.5																		
79.7	119.1	11.8	10.7																		
82.6	133.9	13.3	11.1																		
127.3	165.4	15.5	13.9																		
146.9	187.4	13.9	12.2																		
134.3	187.1	16.7	15.3																		
103.4	112.3	13.6	11.2																		
130.3	165.0	13.7	12.0																		
74.9	95.2	7.1	6.2																		
69.6	97.4	7.4	6.8																		
73.1	89.7	7.5	6.2																		
98.0	110.1	10.8	9.5																		
128.3	154.6	13.8	11.7																		
96.0	138.8	12.2	10.5																		
142.0	186.5	15.5	14.0																		
150.0	198.4	16.1	14.4																		
144.9	190.8	14.6	12.6																		
104.5	160.9	13.9	12.5																		
106.9	137.3	13.2	12.2																		
136.3	147.4	10.6	11.4																		
91.9	164.6	12.9	10.7																		
69.2	108.7	10.2	8.9																		
101.0	143.6	13.1	11.2																		
122.5	149.1	14.5	12.2																		
98.9	118.5	13.5	11.5																		
95.0	102.5	11.7	10.8																		
84.9	96.9	8.4	6.7																		
130.6	167.5	14.8	13.6																		
134.7	179.7	14.3	12.6																		
128.5	172.1	15.0	13.6																		
88.7	129.4	12.1	11.3																		
79.0	98.2	10.5	9.10																		
138.8	187.0	15.2	14.5																		
69.9	102.6	11.9	10.6																		
139.2	164.6	11.9	12.6																		
150 (24hr)	200 (8hr)	100 (Annual)	365 (24hr)																	ECR, 1997 and subsequent amendment	
150 (IT-1), 50 (24hr)	-	200 (1-Hr)	125 (IT-1), 20 (24hr)																		IFC, 2007





Ambient air quality for all the pollutant gases have been recorded as well below the standard limit at two locations during this month of June 2019. Ambient air quality of the gaseous pollutants were recorded lower than previous month due to wet deposition in monsoon period. But the concentration of particulate matters were higher than the air quality monitoring result of previous month i.e. May, 2019 due to increase of the construction activities at a number of places in the project site. During the air quality-monitoring period, it was observed that the construction activities of the Plant were faster than the previous month. The construction activities were continued as much as possible during this rainy season. During the dry days, exposed soil at the project site eroded with the wind is responsible for increased SPM and PM concentration in ambient air of the project site. Exposed dry soil of Block –B area were also contributing significantly to increase the particulate matter in the ambient air. The main sources of SO<sub>2</sub> and NO<sub>x</sub> were located outside the projects boundary like vehicular movement, vessel movement, industries etc. in the air shed. Emission from the vehicular or vessel movement, industrial emission etc. are responsible for the raising concentration of the criteria pollutants in the ambient air. However, the causes decrease of gaseous pollutants and potential sources of air pollutants during the 24 hrs. sampling are presented below:

- Monsoon rainfall has diluted the gases pollutant (SO<sub>2</sub>, NO<sub>x</sub>, CO) in ambient air of the project site
- Increasing work activities has raised Particulate matter emission to the ambient environment especially during dry days.
- Exposed/uncovered dry soil at the Block-B area;
- Construction works such as piling, excavation, surface levelling, building construction and other civil works etc.;
- Particulate matter blown from the stockpile of sand, stone, debris due to speedy blowing wind etc.;
- Incremental increase of criteria pollutants in ambient air quality is resulted due to increase the sources of air pollutants like industries, vehicles, vessels etc.

Since maximum project works are limited during the daytime, the pollutants' concentrations increases during the daytime and reduces during the night time. Therefore, the collective pollution concentration for each of the criteria pollutants represents the average values for 24 hrs. However, the ambient air pollutants have been found within the standard limit as set by the ECR'1997 and subsequent amendments in ECR 2005. The Project authority should take further necessary actions, such as, use of covered van, regular water spraying over the exposed / uncovered top soil of the Project site especially the dry days, avoiding unpaved road for vehicular movement. Furthermore, the project authority should ensure the use of dust mask for the labourers etc. during working hours at the construction site for their occupational health and safety.

### 3.2 Water Quality

As per the Environmental Management Plan (EMP) of the EIA Report and EIA approval condition, "the Project Authority will not use ground water during construction as well as operation purposes of the Power Plant." Therefore, BHEL has to use desalinized Passur River water during this construction stage of the Power Plant. Accordingly, a small scale Reverse Osmosis (RO) desalinization Plant near the BHEL office has been operating to supply the

required drinking water. Additionally, a large scale desalinization Plant based on Reverse Osmosis (RO) technology has been established near the proposed Jetty of the Project and is under operation for supplying the required water for construction at site. Moreover, this desalinization RO technology based Plant is also used for supplying drinking water for the labourers as well as officials working at the Project site.

During this monitoring period, it was observed that the permanent drainage network construction is ongoing which will be used for discharging storm water accumulated within the Project area to the adjacent river. During this monsoon period, the rainfall runoff has increased which was discharged through the certain drainage network system. As mentioned earlier, during this 15<sup>th</sup> monitoring program, three samples were collected, one from RO technology based Water Treatment Plant discharge outlet, one from storm water discharge outlet and one from drinking water supply point from Plant jetty site for water quality analysis. The analysis results have been presented in Table 3.2 and Table 3.3.

**Table 3.2: RO Discharge Water Quality Monitoring Result**

A (April 2018-December 2018)											
Parameters	1 <sup>st</sup> MM Result (April, 2018)	2 <sup>nd</sup> MM Result (May, 2018)	3 <sup>rd</sup> MM Result (June, 2018)	4 <sup>th</sup> MM Result (July, 2018)	5 <sup>th</sup> MM Result (August, 2018)	6 <sup>th</sup> MM Result (September, 2018)	7 <sup>th</sup> MM Result (October, 2018)	8 <sup>th</sup> MM Result (November 2018)	9 <sup>th</sup> MM Result (December, 2018)	ECR, 1997 for Inland SW	IFC 2007, Effluent Guidelines
Temp (°C)	30.80	32.10	34.32	32.04	31.81	31.50	31.22	30.5	26.50	45 <sup>o</sup> (Winter)	3degC the edge of the mixing zone
pH	7.70	7.90	7.86	8.71	8.43	7.73	8.09	7.85	7.78	6-9	6-9
EC (µS/cm)	28,000	48,800	30,700	1180	577.00	498.00	822	1000	9480	1200	-
TDS (mg/L)	14,000	24,600	18,040	757	369.00	319.00	419.0	520	4740	2100	-
DO (mg/L)	4.50	4.90	4.34	7.86	7.32	6.84	6.64	6.15	7.84	4.8-8	-
BOD <sub>5</sub> (mg/L)	2.30	2.41	2.00	1.00	1.00	1.00	1.00	12.00	11.00	50	30*
COD(mg/L)	417.25	520	480	4.00	4.00	4.00	4.00	44.00	40.00	200	125*
TH(mg/L)	4,900	5,220	4520	300	240	240	295	865	1255	-	-
Cl <sup>-</sup> (mg/L)	514	14,500	11800	225	105	140	76.00	2120	2910	600	-
SO <sub>4</sub> <sup>2-</sup> (mg/L)	1209	1520	1360	43.00	16.00	53.00	26.00	650	740	-	-
PO <sub>4</sub> <sup>3-</sup> (mg/L)	0.299	0.450	2.06	0.35	0.53	0.22	0.27	0.31	2.30	-	2*
NO <sub>3</sub> <sup>-</sup> (mg/L)	5.07	5.40	3.20	2.10	3.00	2.90	1.50	3.70	6.50	10	10*
Salinity (ppt)	15.80	25.80	19	0.60	0.30	2.70	1.80	1.76	5.44	-	-
Turbidity (NTU)	13.00	10.60	10.7	41.9	28.90	12.6	7.56	9.15	16.50	-	-

B (January 2019-June 2019)								
Parameters	10 <sup>th</sup> MM Result (January, 2019)	11 <sup>th</sup> MM Result (February, 2019)	12 <sup>th</sup> MM Result (March, 2019)	13 <sup>th</sup> MM Result (April, 2019)	14 <sup>th</sup> MM Result (May, 2019)	15 <sup>th</sup> MM Result (June, 2019)	ECR , 1997 for Inland SW	IFC 2007, Effluent Guidelines
Temp (°C)	21.42	22.14	26.87	31.96	31.62	30.55	45 <sup>o</sup> (Winter)	3degC the edge of the mixing zone
pH	7.20	7.88	7.50	7.53	6.97	7.80	6-9	6-9
EC (µS/cm)	23,300	26,600	27,100	2,180	3340	2,630	1200	-
TDS (mg/L)	14,500	16,500	16,500	1,390	2140	1,570	2100	-
DO (mg/L)	6.35	7.88	10.20	9.84	12.43	7.72	4.8-8	-
BOD <sub>5</sub> (mg/L)	50.0	60.00	68.00	6.00	12.00	10	50	30*
COD(mg/L)	204.00	244.00	260.00	24.00	56.00	48	200	125*
TH(mg/L)	2740	5300	3000	163	265	270	-	-
Cl <sup>-</sup> (mg/L)	7850	9200	9220	370	505	450	600	-
SO <sub>4</sub> <sup>2-</sup> (mg/L)	760	237.30	238.06	15.17	25.00	10.67	-	-
PO <sub>4</sub> <sup>3-</sup> (mg/L)	1.17	1.17	0.054	0.06	0.06	0.127	-	2*
NO <sub>3</sub> <sup>-</sup> (mg/L)	7.7	7.95	2.378	3.15	4.62	3.13	10	10*
Salinity (ppt)	14.10	16.2	16.6	1.10	1.7	1.3	-	-
Turbidity (NTU)	10.00	2.73	6.08	21.10	9.31	14.10	-	-

Source: CEGIS field visit and laboratory analysis, 2019

Note: WQ – Water Quality; SW – Surface Water; MM: Monthly monitoring

\*Sanitary Sewage Discharges of IFC, 2007

As per the recommendation of EMP and EIA approval condition, the project proponent is operating the desalinization Plant to produce fresh water through RO system. The rejected water from RO system are reverted to Passur River through pipeline. It has been observed that most of the water quality parameters in the RO Plant (near the jetty site) rejected discharge contains relatively lower concentration of the selected parameters than the previous month except pH and Turbidity. It may be mentioned here that, the intake river water chemical composition (parameters) play the pivotal role for the discharge water quality of RO Plant. However, the analysis results of the reaming parameter have been found within the standard limit of ECR, 1997 except EC. Withdrawal of saline water from the Passur river through the intake for RO is responsible for increasing the concentration of EC. However, the total daily maximum load is so minute with respect to Passur River tidal flow volume that the effects would be insignificant.

Table 3.3: Storm Water Discharge Quality Monitoring Result

Parameters	3 <sup>rd</sup> MM Result (April 2018)	4 <sup>th</sup> MM Result (July 2018)	5 <sup>th</sup> MM Result (August 2018)	6 <sup>th</sup> MM Result (September 2018)	7 <sup>th</sup> MM Result (October 2018)	8 <sup>th</sup> MM Result (November 2018)	9 <sup>th</sup> MM Result (December 2018)	10 <sup>th</sup> MM Result (January 2019)	11 <sup>th</sup> MM Result (February 2019)	12 <sup>th</sup> MM Result (March 2019)	13 <sup>th</sup> MM Result (April 2019)	14 <sup>th</sup> MM Result (May 2019)	15 <sup>th</sup> MM Result (June 2019)	ECR, 1997 for Inland SW	IFC 2007, Effluent Guidelines
Temp (°C)	31.98	35.80	32.67	31.02	32.2	30.00	27.00	21.95	25.64	29.17	33.20	34.74	32.06	45 (Winter)	3°C at the edge of the mixing zone
pH	8.16	7.94	7.56	7.80	7.53	7.15	7.04	7.96	8.10	8.32	7.75	7.53	7.76	6-9	6-9
EC (µS/cm)	1190	12,500	3830	823	7510	5500	2108	5,710	5,140	4,170	5,500	12900	7,930	1200	-
TDS (mg/L)	593	7,780	2450	519	3650	2715	1052	3,600	3,240	2,670	3,380	8000	5,000	2100	-
DO(mg/L)	4.63	6.84	6.89	6.92	7.31	6.95	6.89	8.51	6.84	6.25	10.07	8.4	7.37	4.8-8	-
BOD <sub>5</sub> (mg/L)	2.00	3.00	12.00	4.00	5.00	7.00	26.00	14.00	12.00	2.00	9.00	25.	86		30*
COD(mg/L)	8.00	16.00	50.00	1.00	16.00	24.00	80.00	52.00	48.00	8.00	40.00	96	320		125*
TH(mg/L)	300	3900	655	765	770	325	495	715	2500	585	713	1100	845		-
Cl <sup>-</sup> (mg/L)	290	3850	880	1360	1660	305	505	1540	1410	950	1750	2480	1520		-
SO <sub>4</sub> <sup>2-</sup> (mg/L)	69	750	190	480	250	57.00	120	360	153.86	151.20	162.03	164.28	148.87		-
PO <sub>4</sub> <sup>3-</sup> (mg/L)	1.91	0.37	0.43	0.36	0.18	0.31	0.42	0.67	0.80	0.02	0.02	0.03	0.04		2*
NO <sub>3</sub> <sup>-</sup> (mg/L)	5.60	4.20	3.30	0.40	3.20	2.00	1.726	10.00	2.694	1.83	3.09	12.99	9.13		10*
Salinity (ppt)	0.6	7.10	2.00	0.40	1.60	1.10	1.12	3.10	2.80	2.20	3.00	7.4	4.30		-
Turbidity (NTU)	334	89.3	15.30	11.60	2.15	3.30	5.24	25.00	12.20	6.17	87.50	60.60	23.60		-

Source: CEGIS 2019

Note: WQ – Water Quality; SW – Surface Water; MM: Monthly monitoring

\*Sanitary Sewage Discharges of IFC, 2007

Storm water discharge consists of the waste water from the site, rainfall runoff, sub-surface flow and other sources within the project area. No national or international standards have been fixed for storm water discharge quality. Hence, the standard for effluent has been used for compliance of the storm water discharge from the Project Site.

**Table 3.3** shows the measured storm water discharge quality. Most of the measured water quality parameters were recorded lower than the previous month due to dilution effects of monsoon rainfall runoff. Waste load of the project has been washed out through the storm water and ultimately discharged to the nearby river. Therefore, the concentration of BOD and COD has been recorded higher during this monsoon period. EC and TDS value have been also reduced due to dilution effects but the values are still higher than the standard limit of ECR, 1997.

Wash out from the filling materials of site development are the key cause of higher TDS and EC of the Storm water. Solid and liquid waste disposal from the construction yard, shed and other sources might be responsible for EC and TDS increase. Moreover, the discharge from construction waste water, batching Plant water, washing water, curing water etc., increases the EC and TDS of the storm water discharge.

Drinking water is supplied to the workers continuously. The labourers usually take their required drinking water from the RO supply line established near the Jetty location. Table 3.4 shows the quality of drinking water supplied to the labourers.

Table 3.4: Drinking Water Quality Monitoring Result (Near Jetty Area)

Parameters	1 <sup>st</sup> MM Result (April 2018)	2 <sup>nd</sup> MM Result (May 2018)	3 <sup>rd</sup> MM Result (June 2018)	4 <sup>th</sup> MM Result (July 2018) Near BHEL Office	5 <sup>th</sup> MM Result (Aug 2018)	6 <sup>th</sup> MM Result (Sept 2018)	7 <sup>th</sup> MM Result (Oct 2018)	8 <sup>th</sup> MM Result (Nov 2018)	9 <sup>th</sup> MM Result (Dec 2018)	10 <sup>th</sup> MM Result (Jan 2019)	11 <sup>th</sup> MM Result (Feb 2019)	12 <sup>th</sup> MM Result (March 2019)	13 <sup>th</sup> MM Result (April 2019)	14 <sup>th</sup> MM Result (May 2019)	15 <sup>th</sup> MM Result (Jun 2019)	ECR , 1997 standard for Drinking Water
Temp (°C)	31.8	31.70	31.86	33.93	31.63	30.2	31.81	30.3	27.15	25.86	22.60	26.40	31.64	32.5	32.12	20-30
pH	8.70	8.97	8.80	6.08	8.09	8.70	8.32	8.10	8.19	6.64	9.04	8.07	8.28	6.30	7.91	6.5-8.5
EC (µS/cm)	70.50	176.00	272	1.00	13.00	54.25	112.0	105.0	52.40	222	733.00	112.00	119	208	130	-
TDS (mg.L <sup>-1</sup> )	34.80	87.00	135	0.00	9.00	26.14	53.0	50.00	26.20	140	470.00	73.00	78.00	128	85	1000
DO (mg.L <sup>-1</sup> )	4.10	5.14	4.5	7.63	7.56	7.10	7.35	7.20	7.34	7.50	8.15	10.46	10.05	10.49	7.78	6.0
BOD <sub>5</sub> (mg.L <sup>-1</sup> )	2.10	2.08	1.00	1.00	1.00	8.00	1.00	1.00	2.00	1.00	1.00	1.00	1.00	1.00	1.00	2.00
COD (mg.L <sup>-1</sup> )	bdl	4.00	4.00	4.00	4.00	3.00	4.00	4.00	8.00	4.00	4.00	4.00	4.00	4.00	4.00	4.00
TH (mg.L <sup>-1</sup> )	bdl	105.00	220	105	115	120.00	135	125.0	145.0	70.00	105.00	135.00	83.00	100.00	120	200-500
Cl <sup>-</sup> (mg.L <sup>-1</sup> )	102.80	36.00	70.00	10.00	10.00	11.00	10.00	24.00	18.00	52.00	120.00	15.00	15.00	28.00	10.00	150-600
SO <sub>4</sub> <sup>2-</sup> (mg.L <sup>-1</sup> )	11.65	4.00	2.00	1.00	1.00	1.00	1.00	2.00	1.00	1.00	6.98	0.54	00	0.00	0.00	400
PO <sub>4</sub> <sup>3-</sup> (mg.L <sup>-1</sup> )	0.0795	0.18	0.66	0.25	0.50	0.23	0.10	0.24	0.25	0.12	0.36	0.001	0	0.05	0.008	6.00
NO <sub>3</sub> <sup>-</sup> (mg.L <sup>-1</sup> )	1.83	0.10	0.4	4.6	2.1	1.70	0.70	1.60	0.128	5.2	1.70	1.726	1.01	2.65	0.86	10.00
Salinity (ppt.)	1.00	0.20	0.10	0.00	0.00	0.21	0.0	0.15	0.026	0.10	0.40	0.10	0.10	0.1	0.1	-
Turbidity (NTU)	5.08	8.81	9.60	0.001	10.00	4.02	0.50	1.50	1.24	0.92	0.29	0.34	0	0.41	0.95	10.00

Source: CEGIS 2019

Note: WQ – Water Quality; SW – Surface Water; MM: Monthly monitoring

\*Sanitary Sewage Discharges of IFC, 2007, bdl- beyond detectable limit; MM: Monthly monitoring

The drinking water quality is considered acceptable as most of the parameters were well within the standard limit. pH, TH and Turbidity have been recorded little bit higher where BOD, COD and Salinity remaining same with respect to previous month of May 2019. Concentration of the remaining water quality parameters were recorded comparatively lower than previous month. However, only the temperature that is a physical parameter has been recorded little higher than the standard limit. The proponent should take necessary steps for reducing temperature of drinking water.

### **3.3 Ambient Noise Level**

The ambient noise level has been monitored at 10 locations inside the Project area, which has been presented in **Figure 2.9** and **Figure 2.10**. The locations were selected based on the sensitivity of the areas and potentiality of the impact magnitude. Monitoring results of the ambient noise is shown in **Table 3.5**. Results were recorded from 10 sampling locations during both day and night time as the equivalent noise level (Leq) in dBA scale.



Table 3.5: Ambient Noise Level from In and Around the Project Site

Location Name	Types of Area	Time	Noise Level dB(A) Leq (1 <sup>st</sup> MM)	Noise Level dB(A) Leq (2 <sup>nd</sup> MM)	Noise Level dB(A) Leq (3 <sup>rd</sup> MM)	Noise Level dB(A) Leq (4 <sup>th</sup> MM)	Noise Level dB(A) Leq (5 <sup>th</sup> MM)	Noise Level dB(A) Leq (6 <sup>th</sup> MM)	Noise Level dB(A) Leq (7 <sup>th</sup> MM)	Noise Level dB(A) Leq (8 <sup>th</sup> MM)	Noise Level dB(A) Leq (9 <sup>th</sup> MM)	Noise Level dB(A) Leq (10 <sup>th</sup> MM)	Noise Level dB(A) Leq (11 <sup>th</sup> MM)	Noise Level dB(A) Leq (12 <sup>th</sup> MM)	Noise Level dB(A) Leq (13 <sup>th</sup> MM)	Noise Level dB(A) Leq (14 <sup>th</sup> MM)	Noise Level dB(A) Leq (15 <sup>th</sup> MM)	ECR, 2006 dB(A), Leq	IFC 2007 dB(A) Leq	Remark
Jetty Site NL-1	Industrial	D	59.3	59.0	66.6	62.5	61.0	52.9	58.6	65.9	68.1	66.8	61.9	65.1	58.4	62.8	60.4	75	70	Movement of heavy vehicles, Excavators running, WTP running, crane activities and human chattering etc.,
		N	55.0	66.9	47.3	58.6	59.2	53.3	63.8	55.1	63.0	61.5	65.0	68.5	46.2	57.0	50.4	70	70	Movement of vehicles, noise from water treatment plant and AQ machine running etc.
Township Construction Area NL -2	Industrial	D	59.5	55.5	56.6	62.9	59.3	62.9	59.8	64.4	65.8	52.8	59.1	64.2	50	57.8	50.8	75	70	Noise generated due to construction activities, Compressor machine running, Bulldozer machine running and Mixing machine running etc.
		N	55.3	63.3	66.6	69.3	63.1	59.1	59.1	51.5	55.0	58.4	60.2	57.1	61.5	46.3	46.5	70	70	Noise generated due to vehicle movement, Soil damping and small generator running etc.
	Industrial	D	58.7	68.8	70	73.6	67.0	60.7	55.2	60.0	65.6	60.1	59.6	58.9	57.3	56.1	59.7	75	70	Noise generated due to Crane activities, Welding, hammering, soil

Location Name	Types of Area	Time	Noise Level dB(A) Leq (1 <sup>st</sup> MM)	Noise Level dB(A) Leq (2 <sup>nd</sup> MM)	Noise Level dB(A) Leq (3 <sup>rd</sup> MM)	Noise Level dB(A) Leq (4 <sup>th</sup> MM)	Noise Level dB(A) Leq (5 <sup>th</sup> MM)	Noise Level dB(A) Leq (6 <sup>th</sup> MM)	Noise Level dB(A) Leq (7 <sup>th</sup> MM)	Noise Level dB(A) Leq (8 <sup>th</sup> MM)	Noise Level dB(A) Leq (9 <sup>th</sup> MM)	Noise Level dB(A) Leq (10 <sup>th</sup> MM)	Noise Level dB(A) Leq (11 <sup>th</sup> MM)	Noise Level dB(A) Leq (12 <sup>th</sup> MM)	Noise Level dB(A) Leq (13 <sup>th</sup> MM)	Noise Level dB(A) Leq (14 <sup>th</sup> MM)	Noise Level dB(A) Leq (15 <sup>th</sup> MM)	ECR, 2006 dB(A), Leq	IFC 2007 dB(A) Leq	Remark
Construction Area NL-3																				compaction and vehicle movement etc.
		N	63.2	70.3	51.3	61.4	62.8	56.4	60.1	66.7	67.0	62.4	61.8	56.8	67.6	62.3	57.6	70	70	Noise generated due to construction activities, welding, vehicle movement and Crain activities etc.
labor Shed (Area) NL-4	Residential	D	58.2	65.6	49.6	57.5	54.1	50.0	58.9	55.0	54.9	52.8	59.4	62.9	61.1	47.3	58.4	55	55	Noise generated from Human chattering, Music and Vehicle movement, etc.
		N	44.4	59.9	60.6	61.1	61.9	69.0	51.0	62.2	56.7	59.8	60.0	58.0	53.2	52.1	52.5	45	45	Generator running, Human chattering and vehicle movement etc.
Near Entrance Gate in front of Health Care Center NL-5	Commercial Area	D	59.6	60.6	62.5	63.6	51.5	60.6	62.0	65.0	64.2	60.9	60.3	55.4	55.8	56.0	57.5	70	70	Noise generated from Vehicle movement, running of construction machine and human chattering etc.
		N	49.2	52.8	57.3	64.7	65.2	60.9	63.5	63.3	62.5	61.8	60.9	63.8	52.6	52.1	53.2	60	70	Noise generated from Mixing machine, Vehicle movement and human chattering etc.
North-East corner of the PB	Industrial	D	53.8	51.6	45.3	46.6	44.5	52.4	58.6	58.0	54.6	47.5	48.5	52.3	46.9	73.3	50.8	75	70	Noise generated due to Construction work and Vehicle movement

Location Name	Types of Area	Time	Noise Level dB(A) Leq (1 <sup>st</sup> MM)	Noise Level dB(A) Leq (2 <sup>nd</sup> MM)	Noise Level dB(A) Leq (3 <sup>rd</sup> MM)	Noise Level dB(A) Leq (4 <sup>th</sup> MM)	Noise Level dB(A) Leq (5 <sup>th</sup> MM)	Noise Level dB(A) Leq (6 <sup>th</sup> MM)	Noise Level dB(A) Leq (7 <sup>th</sup> MM)	Noise Level dB(A) Leq (8 <sup>th</sup> MM)	Noise Level dB(A) Leq (9 <sup>th</sup> MM)	Noise Level dB(A) Leq (10 <sup>th</sup> MM)	Noise Level dB(A) Leq (11 <sup>th</sup> MM)	Noise Level dB(A) Leq (12 <sup>th</sup> MM)	Noise Level dB(A) Leq (13 <sup>th</sup> MM)	Noise Level dB(A) Leq (14 <sup>th</sup> MM)	Noise Level dB(A) Leq (15 <sup>th</sup> MM)	ECR, 2006 dB(A), Leq	IFC 2007 dB(A) Leq	Remark
NL-6		N	45.9	49.7	48.3	54.8	46.0	46.8	47	44.8	49.1	49.5	49.1	51.5	48.8	58.4	45.5	70	70	Noise generated due to Piling, generator running and vehicular movement etc.
South –West Corner NL-7	Industrial	D	60.6	55.8	44.5	53.2	53.0	52.3	52.0	74.3	68.4	50.9	65.5	58.5	61.5	70.6	56.2	75	70	Noise generated due to Crane activities, compressor machine running and vehicular movements etc.
		N	53.5	52.4	49.7	55.9	51.5	57.7	52.6	70.0	64.7	66.9	66.0	63	57.4	63.5	50.1	70	70	Construction activities, hammering, welding and vehicular movements etc.
North west corner of the Project boundary NL-8	Industrial	D	49.8	54.4	57.4	59.5	62.5	49.2	47.5	47.2	47.1	48.2	51.9	62.9	54.5	57.9	61.3	75	70	Noise generated due to Construction works and vehicular movements etc.
		N	63.4	50.5	42.3	62.0	49.4	46.8	49	64.5	62.3	57.9	49.0	52.7	44.7	42.1	51.6	70	70	Noise generated due to vehicular movement, Piling generator running and Hammering etc.
Major construction Area NL-9	Industrial	D	58.5	71.1	66.8	72.1	70.0	72.5	65.5	72.8	71.4	65.2	72.0	65.7	62.8	66.4	63.0	75	70	Noise generated from construction activities, crane operation, bulldozing activities, and running of generators

Location Name	Types of Area	Time	Noise Level dB(A) Leq (1 <sup>st</sup> MM)	Noise Level dB(A) Leq (2 <sup>nd</sup> MM)	Noise Level dB(A) Leq (3 <sup>rd</sup> MM)	Noise Level dB(A) Leq (4 <sup>th</sup> MM)	Noise Level dB(A) Leq (5 <sup>th</sup> MM)	Noise Level dB(A) Leq (6 <sup>th</sup> MM)	Noise Level dB(A) Leq (7 <sup>th</sup> MM)	Noise Level dB(A) Leq (8 <sup>th</sup> MM)	Noise Level dB(A) Leq (9 <sup>th</sup> MM)	Noise Level dB(A) Leq (10 <sup>th</sup> MM)	Noise Level dB(A) Leq (11 <sup>th</sup> MM)	Noise Level dB(A) Leq (12 <sup>th</sup> MM)	Noise Level dB(A) Leq (13 <sup>th</sup> MM)	Noise Level dB(A) Leq (14 <sup>th</sup> MM)	Noise Level dB(A) Leq (15 <sup>th</sup> MM)	ECR, 2006 dB(A), Leq	IFC 2007 dB(A) Leq	Remark
		N	55.1	73.3	61.5	70.3	66.2	65.2	70.7	62.8	69.5	70.7	63.1	63.2	64.8	67.9	58.5	70	70	Noise generated from construction activities, Crain activities, welding and Vehicular movement etc.
Near BIFPCL Area NL-10	Commercial	D	62.8	62.8	59.9	51.3	62.4	45.6	53.3	52.8	57.1	56.2	62.3	62.3	49.5	68.7	52.1	70	70	Vehicular movement Nearby construction works, Human passing by and excavators running
		N	49.4	51.1	45.9	55.7	56.4	54.0	56	63.8	66.8	70.2	62.9	60.8	59.4	47.8	47.8	70	70	Vehicular movement, Honking, Construction Activities and Pilling.

Source: CEGIS, 2019

Massive civil construction activities and mechanical construction are being carried out at the project site by BHEL as per design and stipulated time schedule. The sources of noise have been identified and presented in **Table 3.5**. The construction activities, vehicular movement, running of generator, crane activities, soil compaction machineries, excavators' activity, Soil levelling activity and wind blowing are the major sources of noise generation. As seen from the above Table, the night-time and day time noise level at labour shed areas (NL-4), has exceeded the national standard limit. Operation of generator, construction works, human passing by, crane operation, bulldozing activities, pile driving and vehicular movement are responsible for increased noise level at shed area. Proponent was informed about this situation and suggestions provided for taking necessary measures for improvement of this situation.





## 4. Follow-up Action

The monitoring activities have been performed independently in order to capture the worst-case scenarios of the vital environmental parameters. The result of the environmental parameters shows that most of the monitored environmental parameters are within the permissible limit of Bangladesh standard. Air quality of the project area has been found within the standard limit. A few water quality parameters e.g. EC for RO rejected water; EC and TDS for Storm water discharge water and Temperature of the RO drinking water were recorded higher than the standard limit. The night time and day time noise level at the labor shed area exceeds the Bangladesh national standard.

In order to reduce the water pollution and noise level and to keep the parameters within the Bangladesh standard the following measures should be adopted in the coming months of construction phase of the Project.

- The RO plant should be adjusted to reduce EC of the rejected water discharge to Passur river.
- The sludge from the RO has to be managed properly by the RO operator i.e. AB Water Company.
- The captive generators should be shut down or moved at a distance from the labour shed area after 9:00 pm for reducing the noise level.
- Ensure use of the PPEs by the labourers working at construction yard.



## Appendix I: Compliance Monitoring Form for 2x660 MW MSTPP, Rampal, Bagerhat, BIFPCL

Book No. \_\_\_\_\_

Monitoring Report No. \_\_\_\_\_

**Date:** \_\_\_\_\_ **Time:** \_\_\_\_\_

**Location Id/GPS point:** \_\_\_\_\_

**Weather Condition:** \_\_\_\_\_

**Name of the Investigator:** \_\_\_\_\_ **Signature:** \_\_\_\_\_

A	Monitoring	Description of equipment/ Indicators	Standard/Situation	Observed Situation( $\mu\text{g}/\text{m}^3$ )	Deviation / Change ( $\pm \%$ )	Performance / Comments	Remarks
<b>Checking of the Equipment</b>							
1	Air quality measuring instrument	i.Respirable Dust Sampler (Model- Envirotech India APM-460 BL) ii.Fine Particulate Sampler (Model- Envirotech India APM-550) iii.Metravi CO-10 meter and Tongdy O3 Monitor	1. CO (8hrs)- ( $10000\mu\text{g}/\text{m}^3$ - ECR)) 2. Oxides of Nitrogen ( $\text{NO}_x$ )- $100\mu\text{g}/\text{m}^3$ (Annual)- ECR; [200 (1-Hr)- IFC] 3. Ozone ( $\text{O}_3$ ) - $157\mu\text{g}/\text{m}^3$ (8 Hrs.)-ECR; 160-(IT-1), 100- (8-hr)-IFC 4. $\text{PM}_{2.5}$ - $65\mu\text{g}/\text{m}^3$ -ECR; 75 (IT-1), 25 (24 hr)-IFC 5. $\text{PM}_{10}$ - $150\mu\text{g}/\text{m}^3$ -ECR; 150 (IT-1), 50 (24 hr)-IFC 6. SPM- $200\mu\text{g}/\text{m}^3$ (8 Hrs.)- ECR;	<b><u>AQ-1 (Shed):</u></b> a. $\text{SO}_2 = 12.2$ b. $\text{NO}_x = 13.9$ c. SPM = 187.4 d. $\text{PM}_{10} = 146.9$ e. $\text{PM}_{2.5} = 38.4$ f. CO = 13 g. $\text{O}_3 = 04$ <b><u>AQ-2 (Jetty area):</u></b> a. $\text{SO}_2 = 11.4$ b. $\text{NO}_x = 10.6$ c. SPM = 147.4 d. $\text{PM}_{10} = 136.3$ e. $\text{PM}_{2.5} = 30.7$	N/A	<b>AQ 1-</b> Within the standard limit  <b>AQ 2-</b> Within the standard limit	

A	Monitoring	Description of equipment/ Indicators	Standard/Situation	Observed Situation( $\mu\text{g}/\text{m}^3$ )	Deviation / Change ( $\pm$ %)	Performance / Comments	Remarks
			7. Oxides of Sulfur ( $\text{SO}_x$ )-365 $\mu\text{g}/\text{m}^3$	f. $\text{CO}$ = 14 g. $\text{O}_3$ = 04 <b><u>AQ-3(Major Construction area):</u></b> a. $\text{SO}_2$ = 12.6 b. $\text{NO}_x$ = 11.9 c. $\text{SPM}$ = 164.6 d. $\text{PM}_{10}$ = 139.2 e. $\text{PM}_{2.5}$ = 28.8 f. $\text{CO}$ = 11 g. $\text{O}_3$ = 06		<b>AQ 3-</b> Within the standard limit	
2	Water quality measuring instrument	HORIBA U-50 Multi-meter and Lab Analysis	<b><u>Standard (Effluent Guidelines)</u></b> a. Temperature.= 3°C at the age of the mixing zone, IFC2007; 40°C (ECR, 1997) b. pH=6-9 (ECR, 1997; IFC,2007) c. EC=1200 ( $\mu\text{S}/\text{cm}$ ) (ECR, 1997) d. TDS=2100 mg/L(ECR,1997) e. DO=4.8-8 (mg/L) (ECR,1997) f. $\text{BOD}_5$ =50 (mg/L) (ECR,1997)/30 (mg/L) (IFC, 2007) g. COD=200 mg/L (ECR, 1997)/125 (mg/L) (IFC, 2007). h. TH=N/A Cl <sup>-</sup> =600 mg/L (ECR, 1997) i. $\text{SO}_4^{2-}$ =N/A	<b><u>WQ-1: RO Discharge Water</u></b> a. Temp = 30.55 (°C), b. pH = 7.80 c. EC = 2630( $\mu\text{S}/\text{cm}$ ) d. TDS = 1570(mg/L) e. DO = 7.72(mg/L) f. $\text{BOD}_5$ = 10.00 (mg/L) g. COD = 48.00(mg/L) (std. 125, IFC-2007) h. TH = 270(mg/L) i. Cl <sup>-</sup> = 450(mg/L) j. $\text{SO}_4^{2-}$ = 10.67(mg/L) k. $\text{PO}_4^{3-}$ = 0.127(mg/L) l. $\text{NO}_3^-$ = 3.13(mg/L) m. Salinity = 1.3 (ppt.) n. Turbidity = 14.10 (NTU) <b><u>WQ-2: Drinking Water</u></b> a. Temp = 32.12 (°C) b. pH = 7.91	N/A	<b><u>WQ -1</u></b> All of the parameter within the standard limit except EC  <b><u>WQ-2</u></b> Drinking water parameter	The intake water of Passur river was higher EC value





A	Monitoring	Description of equipment/ Indicators	Standard/Situation	Observed Situation( $\mu\text{g}/\text{m}^3$ )	Deviation / Change ( $\pm$ %)	Performance / Comments	Remarks
3	Noise quality measuring instrument	Kanomax Sound level meter- MODEL 4431	1. std. ECR 2006, day= 75dB(A), Night=70 dB(A) IFC2007, day=70 dB(A), night=70 dB(A) 2. std. ECR 2006, day= 75 dB(A), Night=70 dB(A) IFC2007, day=70 dB(A), night=70 dB(A) 3. std. ECR 2006, day= 75 dB(A), Night=70 dB(A); IFC2007, day=70 dB(A), night=70 dB(A) 4. std. ECR 2006, day= 55 dB(A), Night=45 dB(A); IFC2007, day=55 dB(A), night=45 dB(A) 5. std. ECR 2006, day= 70 dB(A), Night=60 dB(A); IFC2007, day=70 dB(A), night=70 dB(A) 6. std. ECR 2006, day= 75 dB(A), Night=70 dB(A); IFC2007, day=70 dB(A), night=70 dB(A) 7. std. ECR 2006, day= 75 dB(A), Night=70 dB(A); IFC2007, day=70 dB(A), night=70 dB(A) 8.. std. ECR 2006, day= 75 dB(A), Night=70 dB(A);	1. <u>Jetty Site NL-1,</u> Day = 60.4 dB(A), Night = 50.4 dB(A) 2. <u>Township Construction Area NL -2,</u> Day = 50.8 dB(A), Night = 46.5 dB(A) 3. <u>Construction Area NL-3,</u> Day = 59.7 dB(A), Night = 57.6 dB(A) 4. <u>Shed (Area) NL-4,</u> Day = 58.4 dB(A), Night = 52.5 dB(A) 5. <u>Near Entrance Gate in front of Health Care Center-NL-5,</u> Day =57.5 dB(A), Night = 53.2 dB(A) 6. <u>North-East corner of the PB NL-6,</u> Day = 50.8 dB(A), Night = 45.5 dB(A) 7. <u>South –West Corner NL-7,</u> Day = 56.2 dB(A), Night = 50.1 dB(A) 8. <u>North west corner of the Project boundary NL-8,</u> Day = 61.3 dB(A), Night = 51.6 dB(A)	N/A	All values were within standard limit except at NL-4 (Night time and Day time) where it exceeded the standard limit	Vehicular movement and operation of diesel generator, human chattering and heavy construction works at night were responsible for slightly higher of noise level at the residential areas

A	Monitoring	Description of equipment/ Indicators	Standard/Situation	Observed Situation( $\mu\text{g}/\text{m}^3$ )	Deviation / Change ( $\pm$ %)	Performance / Comments	Remarks
			IFC2007, day=70 dB(A), night=70 dB(A) 9. std. ECR 2006, day= 75 dB(A), Night=70 dB(A); IFC2007, day=70 dB(A), night=70 dB(A) 10. std. ECR 2006, day= 70 dB(A),Night=60 dB(A); IFC2007, day=70 dB(A), night=70 dB(A)	9. Major construction Area <u>NL-9,</u> Day = 63.0 dB(A), Night = 58.5 dB(A) 10. Near BIFPCL Area <u>NL-10,</u> Day = 52.1 dB(A), Night = 47.8 dB(A)			
<b>Activities of monitoring</b>							
4	Digital process and online system						
5	Documentation/ archiving the monitoring data						
6	Number of accidental events						
7	Sampling of biota to the susceptible zone						
8	LCA of bio indicators						
9	Toxicity magnitude						
10	Behavioral/ attitude in all changes of fauna						

A	Monitoring	Description of equipment/ Indicators	Standard/Situation	Observed Situation( $\mu\text{g}/\text{m}^3$ )	Deviation / Change ( $\pm$ %)	Performance / Comments	Remarks
11	Performance of the Ecosystem management plan						
<b>Interrogating to the investigator</b>							
12	Regularity and authenticity check						
13	Continuation of training and capacity building and awareness, motivational program						
14	Ensure PEPs, ISO standards and ILL during operation of the projects						
15	Ensure the social development program and CSR during the operation of the project						
<b>Interviews of the stakeholders</b>							
16	Socio-economic Progress investigation						
17	Assessing Environmental						

A	Monitoring	Description of equipment/ Indicators	Standard/Situation	Observed Situation( $\mu\text{g}/\text{m}^3$ )	Deviation / Change ( $\pm$ %)	Performance / Comments	Remarks
	pollution related problems						
18	Assess the changes of bio-diversity and ecosystem fragility						
19	Achievement of the social development program						
20	Checking of the Proper implementation of the EMP						

**B. Evaluation** (of any of above points)

**C. Steps to be Taken:**

Non Compliance	Action	Tine Frame
1. Minor:		
2. Moderate:		
3. Major:		
4. Critical:		